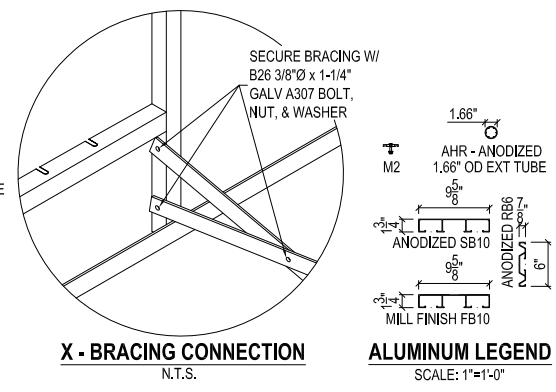


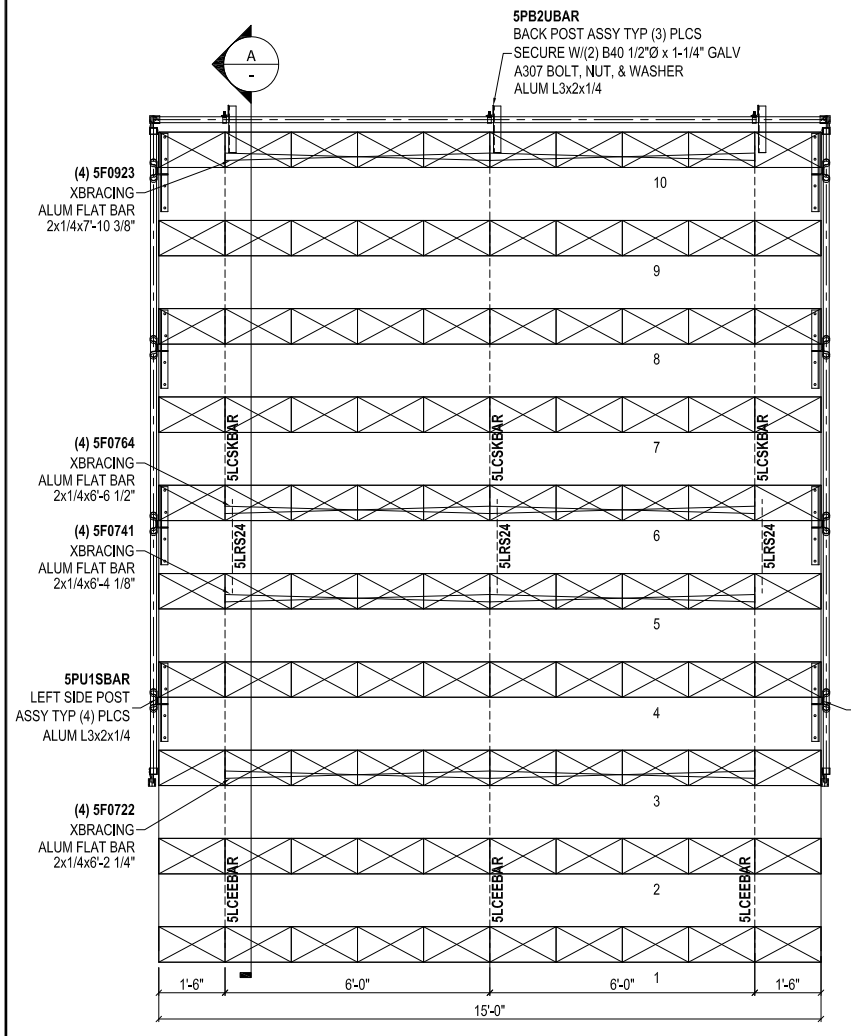
TYP SIDE/BACK RAIL CONN'S
ISOMETRIC VIEW N.T.S.



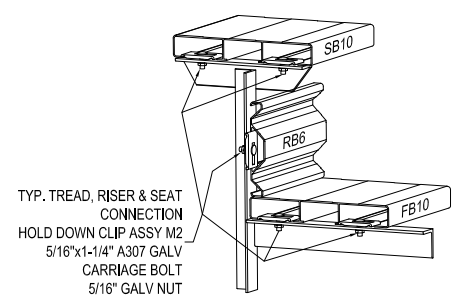
X - BRACING CONNECTION
N.T.S.

PART LIST		TTL WT: 1542	
QTY.	All Star Part #'s	DESCRIPTION	UM FT INCHES
SEATS PER UNIT: 100			
STRUCTURE			
3	5LCCEEBAR	Alum 5 Row 8x24-FBE Econo Deck Typ Frame	1
3	5LCSKBAR	Alum 6-10 Row 8x24 FB Semi Closed Deck Typ Frame	1
XBRACING			
4	5F0722	Alum Brace FB2 x 1/4" x 6'-2 1/4"	1
4	5F0741	Alum Brace FB2 x 1/4" x 6'-4 1/8"	1
4	5F0764	Alum Brace FB2 x 1/4" x 6'-6 1/2"	1
4	5F0923	Alum Brace FB2 x 1/4" x 7'-10 3/8"	1
MISCELLANEOUS			
3	5PB2UBAR	Alum Back Post Not To Grade 8x24FBUFlatW-SB10 - AL3x2x1/4x 5'-10 5/16"	1
4	5PU1SBAR	Surf Mnt Post LIEOS/RIVOM-8x24FBS W-SB10 - AL3x2x1/4x 4'-8 15/16"	1
4	6PU1SBAR	Surf Mnt Post RIEOS/LtVOM-8x24FBS W-SB10 - AL3x2x1/4x 4'-8 15/16"	1
3	5LRS24	Alum Tread Connector 24" FBS-AL2x2x3/16x 2'-1 1/2"	1
RAILING			
4	AHR	1.66" OD Alum Extruded Tube x FT	15 5 1/4
2	AHR	1.66" OD Alum Extruded Tube x FT	15 2 1/2
4	AHR	1.66" OD Alum Extruded Tube x FT	4 2 1/2
FENCING / PICKET			
2	F11	48" Tension Bar	1
4	F12	60" Tension Bar	1
100	F16	8-1/4" Alum Tie Wire	1
18	F17	1-5/8" Tension Band	1
22	F19	1-5/8" Heavy Duty Rail Strap	1
1	F48G9	48" 9 Ga K.K. Galv Fence x FT	16 0
2	F54G9	54" 9 Ga K.K. Galv Fence x FT	18 0
2	RF4	#32 Tee	1
6	RF11	#80 Adjustable Elbow	1
2	RF13	#85 Side Outlet Adj Elbow	1
MISC. HARDWARE			
18	B006	5/16" x 1-1/4" Galv A307 Carriage Bolt	1
22	B010	3/8" x 1-1/2" Galv A307 Carriage Bolt	1
64	B026	3/8" x 1-1/4" Galv A307 Bolt	1
12	B040	1/2" x 1-1/4" Galv A307 Bolt	1
76	B099	#8 x 3/4" Hex Washered Tek Screw	1
183	M2	Tie Down Assembly	1
18	N02	5/16" Nut	1
86	N04	3/8" Nut	1
12	N07	1/2" Nut	1
86	W23	3/8" Flatwasher	1
12	W26	1/2" Flatwasher	1
MISC. ALUMINUM			
24	EC10	Anod. Alum. 1 3/4" Channel x 9-5/8" End Cap - 10" Plank	1
14	EC144	1 3/4" Channel MF Continuous End Cap	1 7 1/4
ALUMINUM			
10	SB10	2" x 10" Plank	15 0
8	RB6	7/8" x 6" Riser	15 0
16	FB10	1.75" x 10" MF Plank	15 0

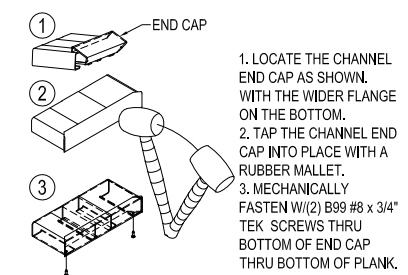
LEFT END ON STAND
3/4"=1'-0"



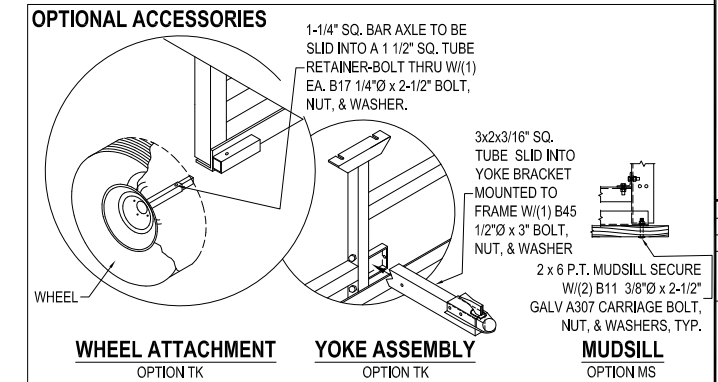
SEATING PLAN
SCALE: 1/2"=1'-0" **SEAT CAPACITY: 100**



TYP PLANK CONNECTION
N.T.S.



END CAP ASSEMBLY
N.T.S.



WHEEL ATTACHMENT OPTION TK
YOKE ASSEMBLY OPTION TK
MUDSILL OPTION MS

MEETS 1994 UBC BUILDING CODE

6550 NEW TAMPA HWY.
LAKELAND, FLORIDA 33815
(800) 875-3141
(863) 687-3141
(813) 628-4254



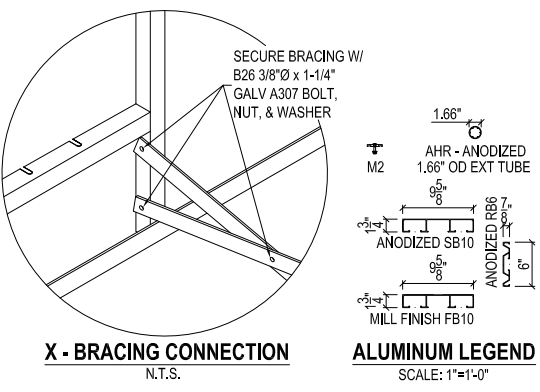
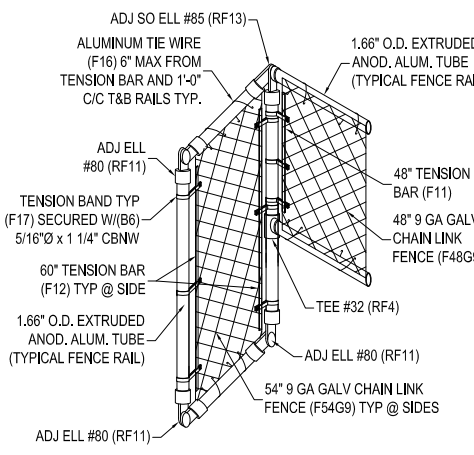
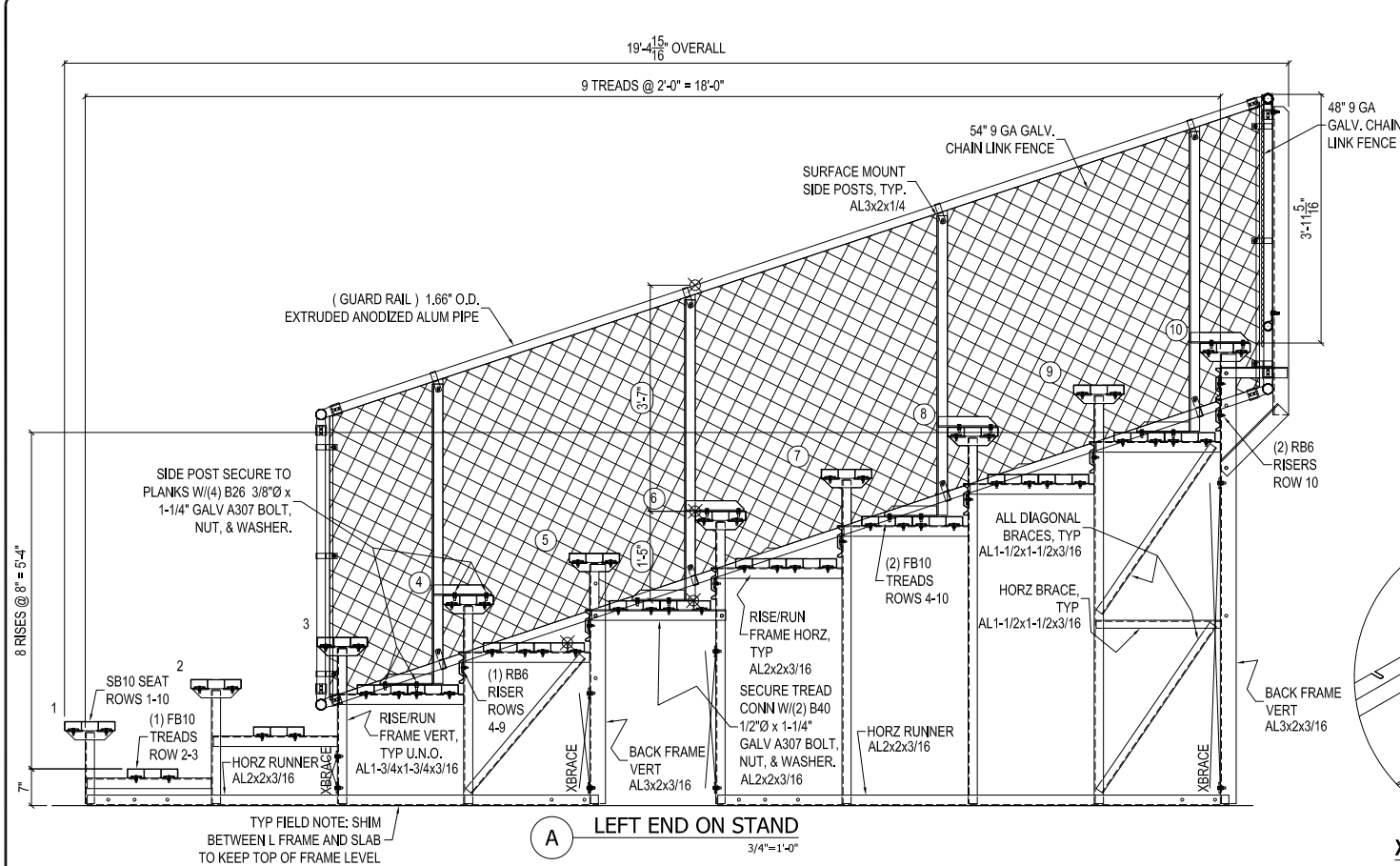
This drawing is the property of All Star Bleachers. The information contained within is proprietary. Unauthorized reproduction through either mechanical or electronic medium is prohibited without the express written consent of All Star Bleachers.

All Star Bleachers

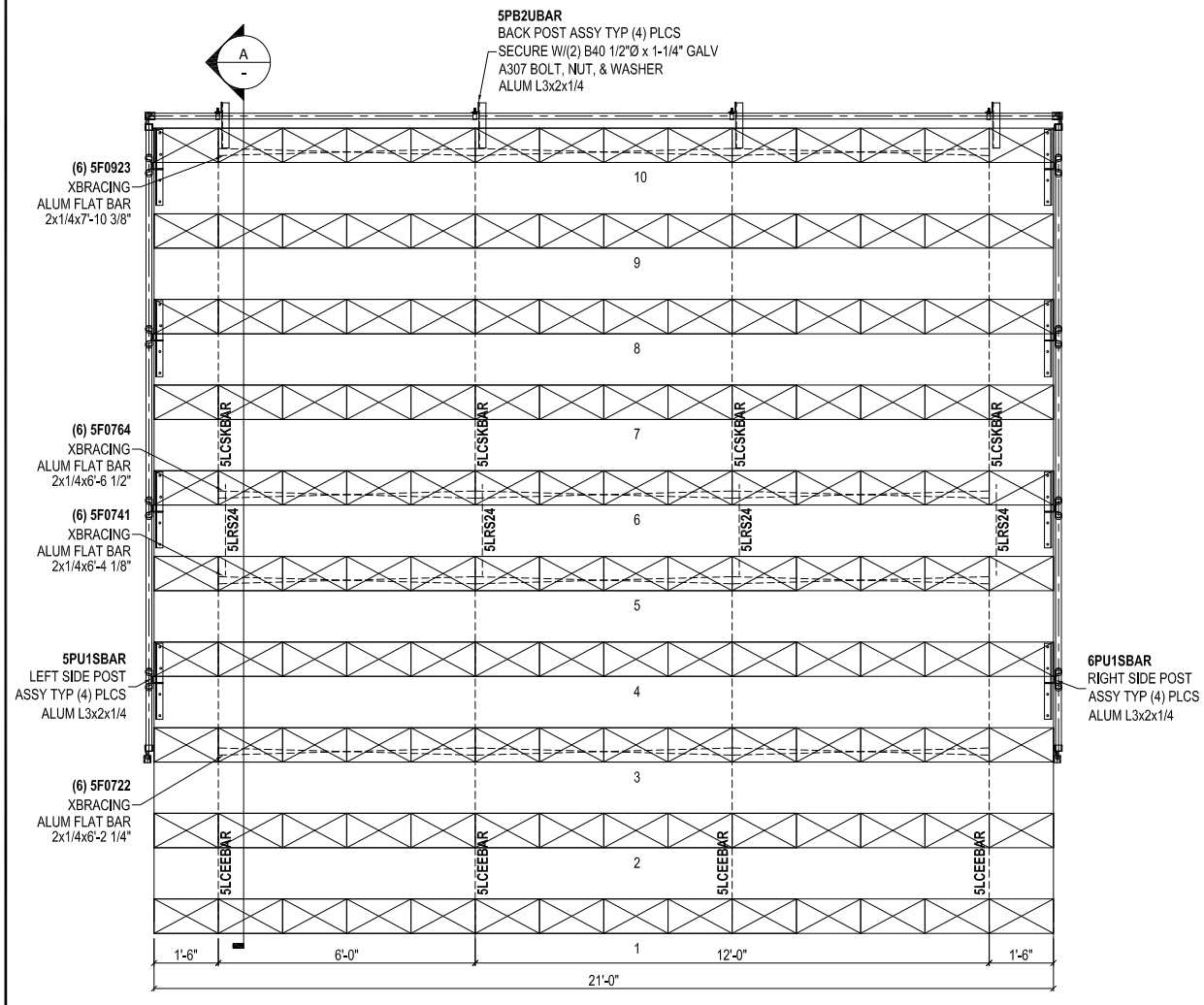
(1) 10 ROW x 15'-0"

5AE10BA0150G9FRN (A10SD15C)
ALUMINUM 10 ROW x 15'-0"
8" RISE x 24" TREAD FBE
10" SEAT SGL/DBL FT BD

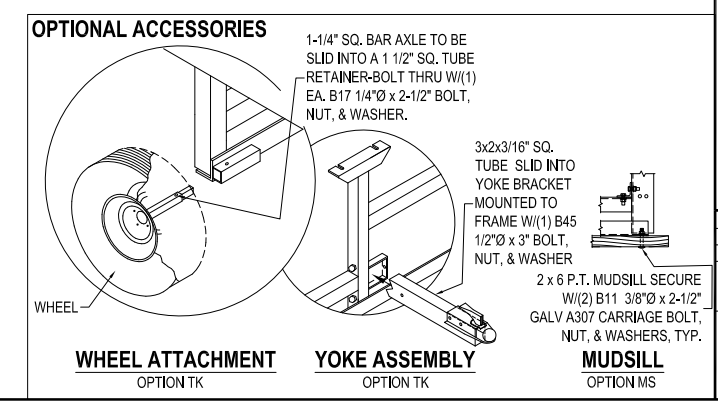
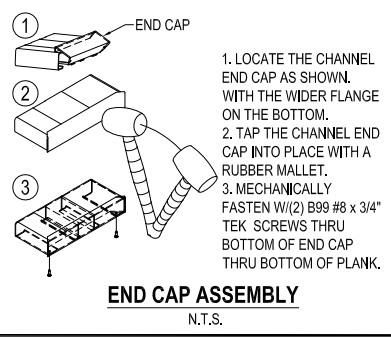
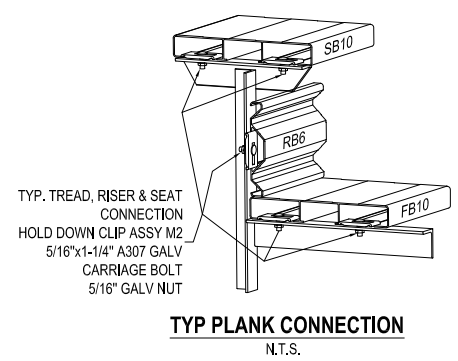
DRAWN BY: BKJ DATE: 12-19-08
CHKD BY: DATE:
SCALE: NOTED
JOB NUMBER: **STANDARD**
SHEET NUMBER: **A10SD15C**
Rev: 0



PART LIST		TTL WT: 2033	
QTY.	All Star Part #s	SEATS PER UNIT: 140	UM
		DESCRIPTION	FT INCHES
STRUCTURE			
4	5LCEEBAR	Alum 5 Row 8x24-FBE Econo Deck Typ Frame	1
4	5LCSKBAR	Alum 6-10 Row 8x24-FBS Deck Typ Frame	1
XBRACING			
6	5F0722	Alum Brace FB2 x 1/4" x 6'-2 1/4"	1
6	5F0741	Alum Brace FB2 x 1/4" x 6'-4 1/8"	1
6	5F0764	Alum Brace FB2 x 1/4" x 6'-6 1/2"	1
6	5F0923	Alum Brace FB2 x 1/4" x 7'-10 3/8"	1
MISCELLANEOUS			
4	5PB2UBAR	Alum Back Post Not To Grade 8x24FBUFlatW-SB10 - AL3x2x1/4x 5'-10 5/16"	1
4	5PU1SBAR	Surf Mnt Post LIEOS/RIVOM-8x24FBS W-SB10 - AL3x2x1/4x 4'-8 15/16"	1
4	6PU1SBAR	Surf Mnt Post RIEOS/LIVOM-8x24FBS W-SB10 - AL3x2x1/4x 4'-8 15/16"	1
4	5LRS24	Alum Tread Connector 24" FBS-AL2x2x3/16x 2'-1 1/2"	1
RAILING			
2	AHR	1.66" OD Alum Extruded Tube x FT	21 2 1/2
4	AHR	1.66" OD Alum Extruded Tube x FT	15 5 1/4
4	AHR	1.66" OD Alum Extruded Tube x FT	4 2 1/2
FENCING / PICKET			
2	F11	48" Tension Bar	1
4	F12	60" Tension Bar	1
100	F16	8-1/4" Alum Tie Wire	1
18	F17	1-5/8" Tension Band	1
24	F19	1-5/8" Heavy Duty Rail Strap	1
1	F48G9	48" 9 Ga K.K. Galv Fence x FT	22 0
2	F54G9	54" 9 Ga K.K. Galv Fence x FT	18 0
2	RF4	#32 Tee	1
6	RF11	#80 Adjustable Elbow	1
2	RF13	#85 Side Outlet Adj Elbow	1
MISC. HARDWARE			
18	B006	5/16" x 1-1/4" Galv A307 Carriage Bolt	1
24	B010	3/8" x 1-1/2" Galv A307 Carriage Bolt	1
76	B026	3/8" x 1-1/4" Galv A307 Bolt	1
16	B040	1/2" x 1-1/4" Galv A307 Bolt	1
76	B099	#8 x 3/4" Hex Washered Tek Screw	1
244	M2	Tie Down Assembly	1
18	N02	5/16" Nut	1
100	N04	3/8" Nut	1
16	N07	1/2" Nut	1
100	W23	3/8" Flatwasher	1
16	W26	1/2" Flatwasher	1
MISC. ALUMINUM			
24	EC10	Anod. Alum. 1 3/4" Channel x 9-5/8" End Cap - 10" Plank	1
14	EC144	1 3/4" Channel MF Continuous End Cap	1 7 1/4
ALUMINUM			
10	SB10	2" x 10" Plank	21 0
8	RB6	7/8" x 6" Riser	21 0
16	FB10	1.75" x 10" MF Plank	21 0



SEATING PLAN
SCALE: 1/2"=1'-0"
SEAT CAPACITY: 140



MEETS 1994 UBC BUILDING CODE

NOTE:
ALL PART & HARDWARE NUMBERS
ARE ALL STAR BLEACHERS INTERNAL
NUMBERS ONLY.

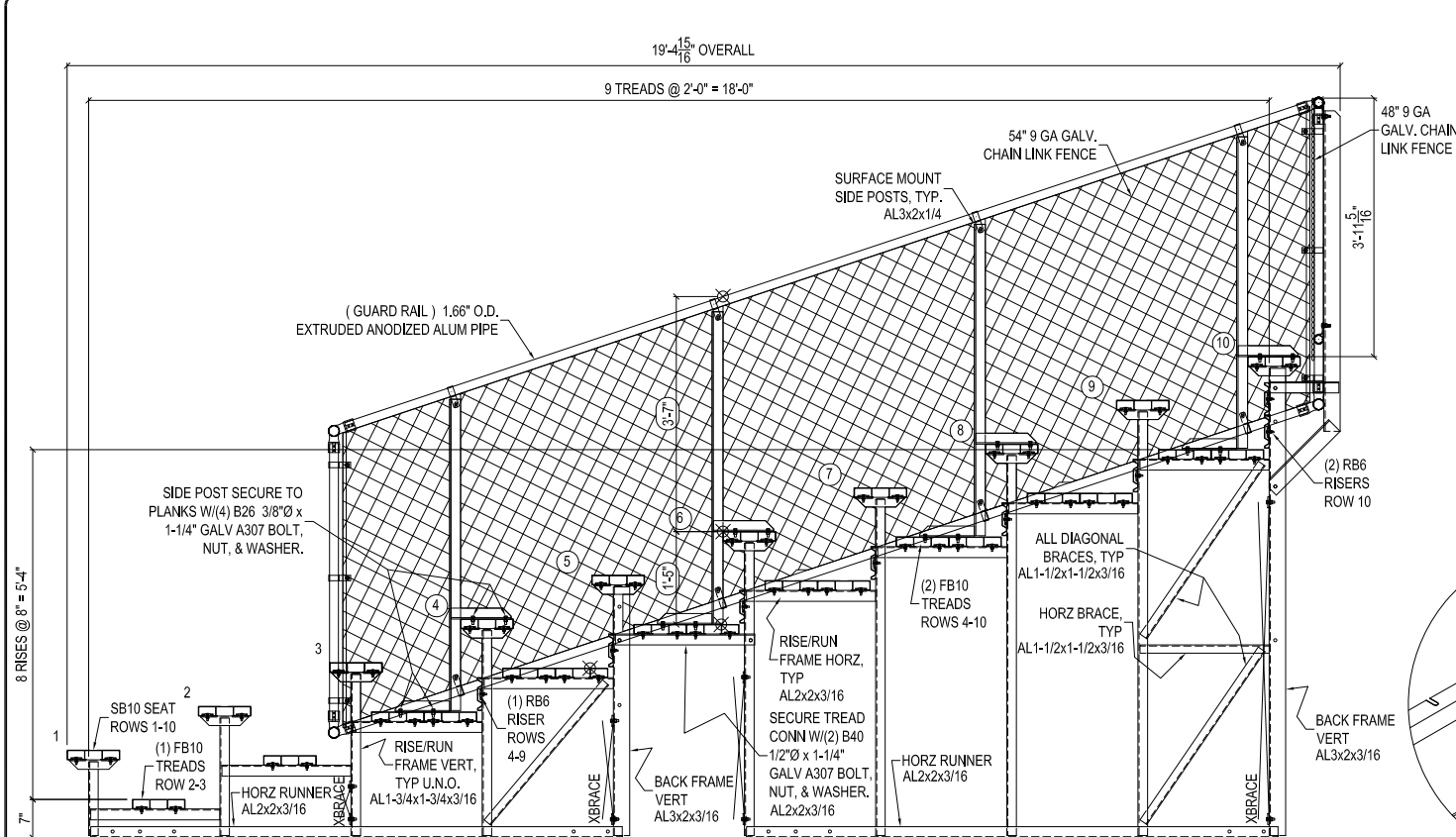


This drawing is the property of All Star Bleachers. The information contained within is proprietary. Unauthorized reproduction through either mechanical or electronic medium is prohibited without the express written consent of All Star Bleachers.

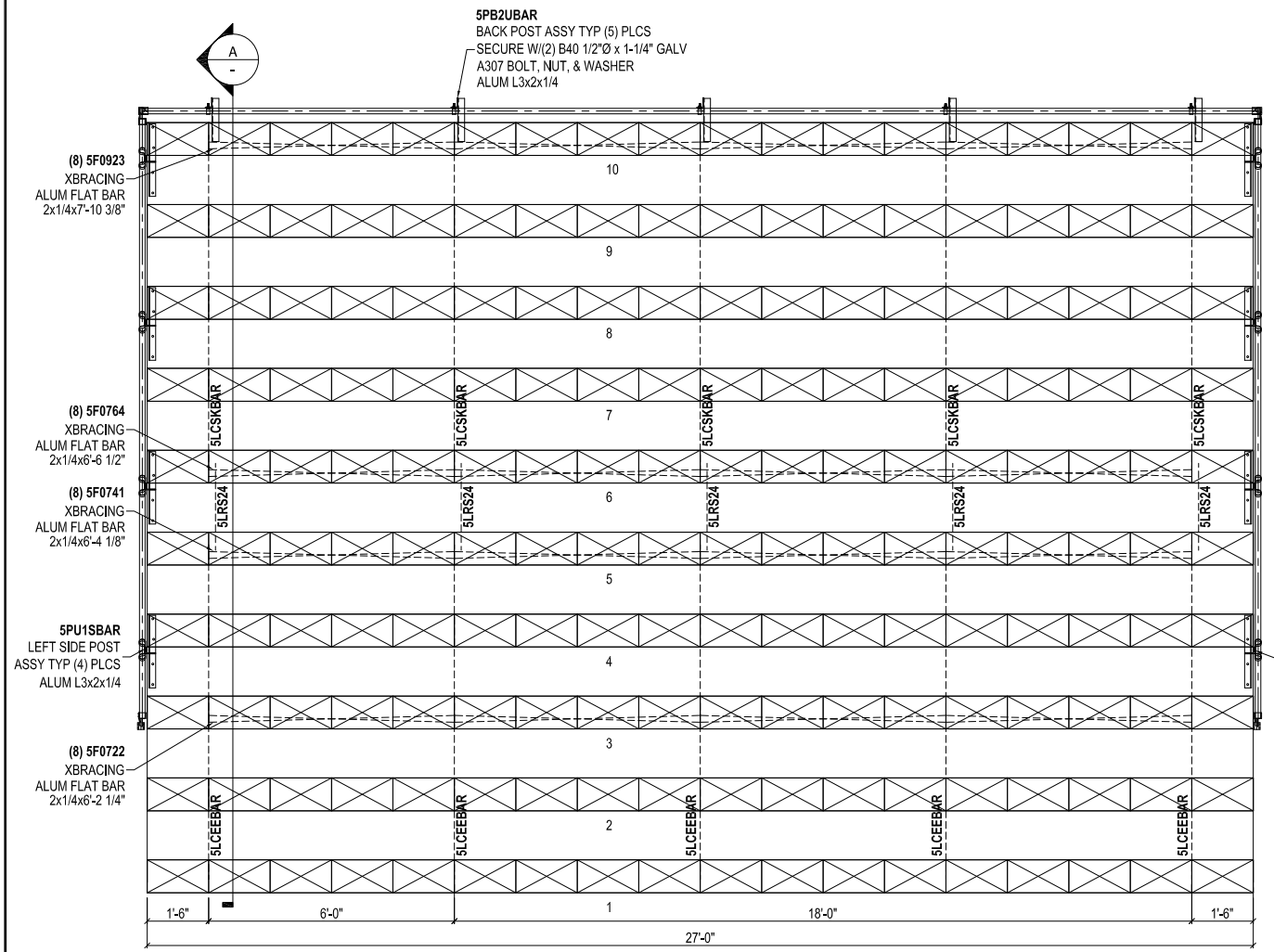
(1) 10 ROW x 21'-0"

5AE10BA0210G9FRN (A10SD21C)
ALUMINUM 10 ROW x 21'-0"
8" RISE x 24" TREAD FBE
10" SEAT SGL/DBL FT BD

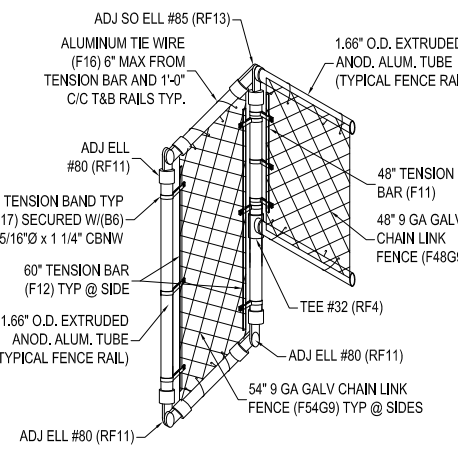
DRAWN BY: BKJ DATE: 1-12-09
CHKD BY: DATE:
SCALE: NOTED
JOB NUMBER:
STANDARD
SHEET NUMBER:
A10SD21C
Rev.: 0



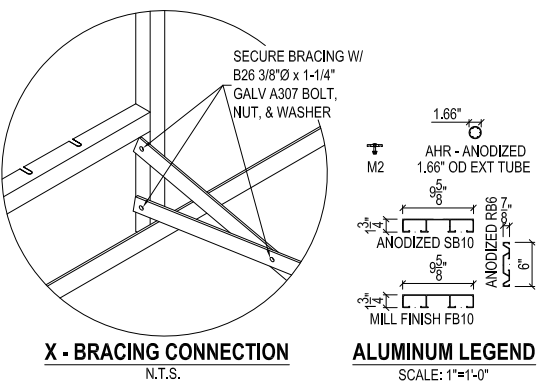
A LEFT END ON STAND
3/4"=1'-0"



SEATING PLAN
SCALE: 1/2"=1'-0" **SEAT CAPACITY: 180**



TYP SIDE/BACK RAIL CONN'S
ISOMETRIC VIEW N.T.S.

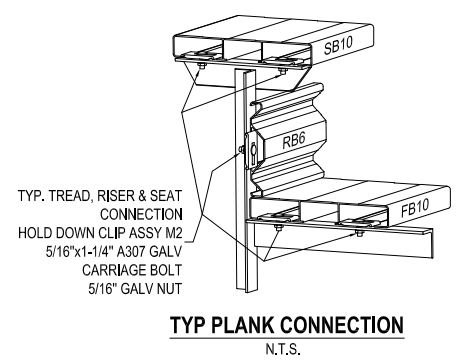


X-BRACING CONNECTION
N.T.S.

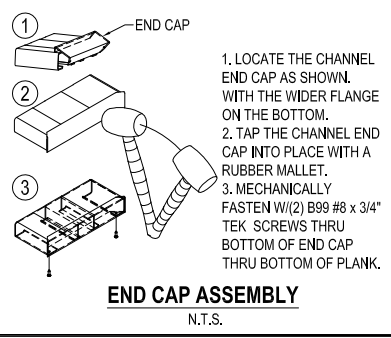
PART LIST				TTL WT: 2526	
QTY.	All Star Part #s	SEATS PER UNIT:180		UM	INCHES
		DESCRIPTION	FT		
STRUCTURE					
5	5LCEEBAR	Alum 5 Row 8x24-FBE Econo Deck Typ Frame	1		
5	5LCSKBAR	Alum 6-10 Row 8x24 FB Semi Closed Deck Typ Frame	1		
XBRACING					
8	5F0722	Alum Brace FB2 x 1/4" x 6'-2 1/4"	1		
8	5F0741	Alum Brace FB2 x 1/4" x 6'-4 1/8"	1		
8	5F0764	Alum Brace FB2 x 1/4" x 6'-6 1/2"	1		
8	5F0923	Alum Brace FB2 x 1/4" x 7'-10 3/8"	1		
MISCELLANEOUS					
5	5PB2UBAR	Alum Back Post Not To Grade 8x24FBUFlatW-SB10 - AL3x2x1/4x 5'-10 5/16"	1		
4	5PU1SBAR	Surf Mnt Post LIEOS/RIVOM-8x24FBS W-SB10 - AL3x2x1/4x 4'-8 15/16"	1		
4	6PU1SBAR	Surf Mnt Post RIEOS/LtVOM-8x24FBS W-SB10 - AL3x2x1/4x 4'-8 15/16"	1		
5	5LRS24	Alum Tread Connector 24" FBS-AL2x2x3/16x 2'-1 1/2"	1		
RAILING					
2	AHR	1.66" OD Alum Extruded Tube x FT	27	2	1/2
4	AHR	1.66" OD Alum Extruded Tube x FT	15	5	1/4
4	AHR	1.66" OD Alum Extruded Tube x FT	4	2	1/2
FENCING / PICKET					
2	F11	48" Tension Bar	1		
4	F12	60" Tension Bar	1		
128	F16	8-1/4" Alum Tie Wire	1		
18	F17	1-5/8" Tension Band	1		
26	F19	1-5/8" Heavy Duty Rail Strap	1		
1	F48G9	48" 9 Ga K.K. Galv Fence x FT	28	0	
2	F54G9	54" 9 Ga K.K. Galv Fence x FT	18	0	
2	RF4	#32 Tee	1		
6	RF11	#80 Adjustable Elbow	1		
2	RF13	#85 Side Outlet Adj Elbow	1		
MISC. HARDWARE					
18	B006	5/16" x 1-1/4" Galv A307 Carriage Bolt	1		
26	B010	3/8" x 1-1/2" Galv A307 Carriage Bolt	1		
88	B026	3/8" x 1-1/4" Galv A307 Bolt	1		
20	B040	1/2" x 1-1/4" Galv A307 Bolt	1		
76	B099	#8 x 3/4" Hex Washered Tek Screw	1		
305	M2	Tie Down Assembly	1		
18	N02	5/16" Nut	1		
114	N04	3/8" Nut	1		
20	N07	1/2" Nut	1		
114	W23	3/8" Flatwasher	1		
20	W26	1/2" Flatwasher	1		
MISC. ALUMINUM					
24	EC10	Anod. Alum. 1 3/4" Channel x 9-5/8" End Cap - 10" Plank	1		
14	EC144	1 3/4" Channel MF Continuous End Cap	1	7	1/4
ALUMINUM					
10	SB10	2" x 10" Plank	27	0	
8	RB6	7/8" x 6" Riser	27	0	
16	FB10	1.75" x 10" MF Plank	27	0	

NOTE:
ALL PART & HARDWARE NUMBERS
ARE ALL STAR BLEACHERS INTERNAL
NUMBERS ONLY.

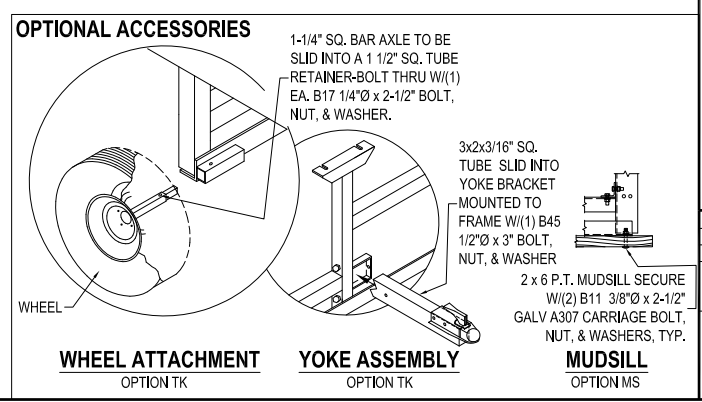
MEETS 1994 UBC BUILDING CODE



TYP PLANK CONNECTION
N.T.S.



END CAP ASSEMBLY
N.T.S.



6550 NEW TAMPA HWY.
LAKELAND, FLORIDA 33815
(800) 875-3141
(863) 687-3141
FAX (813) 628-4254



This drawing is the property of All Star Bleachers. The information contained within is proprietary. Unauthorized reproduction through either mechanical or electronic medium is prohibited without the express written consent of All Star Bleachers.

All Star Bleachers

(1) 10 ROW x 27'-0"

5AE10BA0270G9FRN (A10SD27C)
ALUMINUM 10 ROW x 27'-0"
8" RISE x 24" TREAD FBE
10" SEAT SGL/DBL FT BD

DRAWN BY: BKJ DATE: 11-20-09
CHKD BY: DATE:
SCALE: NOTED
JOB NUMBER:
STANDARD
SHEET NUMBER:
A10SD27C
Rev: 0