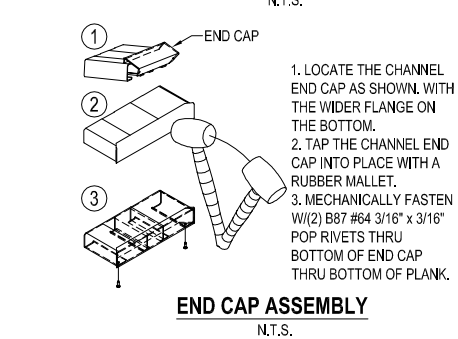
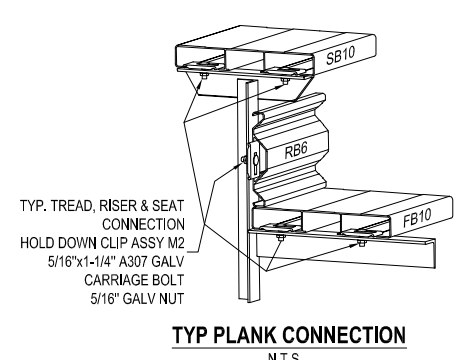
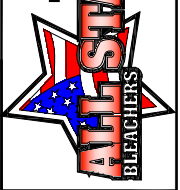


PART LIST		TTL WT: 2241		TTL WT: 2241		
QTY.	All Star Part #s	SEATS PER UNIT: 113	DESCRIPTION	UM FT	EACH WEIGHT	EXTND'D WEIGHT
STRUCTURE						
4	5LCSEBAR	Alum 5 Row 8x24-FBS Deck Typ Frame		1	28.23	112.93
4	5LCSKBAR	Alum 6-10 Row 8x24-FBS Deck Typ Frame		1	44.99	179.96
XBRACING						
6	5F0722	Alum Brace FB2 x 1/4" x 6'-2 1/4"		1	3.63	21.78
6	5F0741	Alum Brace FB2 x 1/4" x 6'-4 1/8"		1	3.72	22.34
6	5F0764	Alum Brace FB2 x 1/4" x 6'-6 1/2"		1	3.84	23.03
6	5F0923	Alum Brace FB2 x 1/4" x 7'-10 3/8"		1	4.61	27.69
MISCELLANEOUS						
18	5BLU24T	Alum 24" FBU Aisle Batten - AL2x2x3/16"x 1'-10 1/2"		1	1.59	28.69
4	5LRS24	Alum Tread Connector 24" FBS-AL2x2x3/16x 2'-1 1/2"		1	1.81	7.22
4	5PB2UBAR	Alum Back Post Not To Grade 8x24FBUFlatW-SB10 - AL3x2x1/4x 5'-10 5/16"		1	9.67	38.66
4	5PU1SBAR	Surf Mnt Post LIEOS/RIVOM-8x24FBS W-SB10 - AL3x2x1/4x 4'-8 15/16"		1	8.59	34.34
4	6PU1SBAR	Surf Mnt Post RIEOS/LIVOM-8x24FBS W-SB10 - AL3x2x1/4x 4'-8 15/16"		1	8.59	34.34
RAILING						
6	5MPG005	Alum Hand Rail Base Backing Plate - Alum PL1/4x5x 0'-9"		1	1.10	6.62
4	AHR	1.66" OD Alum Extruded Tube x FT		15	5 1/4	8.38
2	AHR	1.66" OD Alum Extruded Tube x FT		21	2 1/2	11.52
4	AHR	1.66" OD Alum Extruded Tube x FT		4	2 1/2	2.29
3	HR2T2408	2 Tread Anod Alum Mid Aisle Hand Rail (24" Tread x 8" Rise)		1	14.00	42.00
FENCING / PICKET						
1	F48G9	48" 9 Ga K.K. Galv Fence x FT		22	0	64.02
2	F54G9	54" 9 Ga K.K. Galv Fence x FT		18	0	58.50
116	RF015	8-1/4" Alum Tie Wire		1		0.01
24	RF019	1-5/8" Heavy Duty Rail Strap		1		0.31
2	RF032	#32 Tee		1		0.55
6	RF080	#80 Adjustable Elbow		1		1.20
2	RF085	#85 Side Outlet Adj Elbow		1		1.40
18	TB01	1-5/8" Tension Band		1		0.14
2	TB48	48" Tension Bar		1		1.46
4	TB60	60" Tension Bar		1		1.84
MISC. HARDWARE						
18	B006	5/16" x 1-1/4" Galv A307 Carriage Bolt		1		0.04
24	B010	3/8" x 1-1/2" Galv A307 Carriage Bolt		1		0.08
76	B026	3/8" x 1-1/4" Galv A307 Bolt		1		0.07
24	B031	3/8" x 3" Galv A307 Bolt		1		0.12
16	B040	1/2" x 1-1/4" Galv A307 Bolt		1		0.18
45	B134	3/16" x 1/4" Grip Black Pop Rivet		1		0.00
72	B087	#64 3/16" x 3/16" Grip Alum Pop Rivet		1		0.00
24	B381.5	3/8" x 1-1/2" Galv A307 Bolt		1		0.07
354	M2	Tie Down Assembly		1		0.10
18	N02	5/16" Nut		1		0.00
148	N04	3/8" Nut		1		0.01
16	N07	1/2" Nut		1		0.04
148	W23	3/8" Flatwasher		1		0.02
16	W26	1/2" Flatwasher		1		0.04
MISC. ALUMINUM						
38	EC10	Anod. Alum. 1 3/4" Channel x 9-5/8" End Cap - 10" Plank		1		0.23
18	EC144	1 3/4" Channel MF Continuous End Cap		1	7 1/4	0.60
18	EC5	Anod. Alum. 1 3/4" Channel x 4-5/8" End Cap - 5" Plank		1		0.11
9	NOS48	Black Tread Nose - Extruded Alum L1" x 1" x 1/8" x 4'-0"		1		0.94
ALUMINUM						
18	FB10	1.75" x 10" MF Plank		21	0	39.08
9	FB35	1.75" x 5" Long Nose Plank		4	0	4.45
10	RB6	7/8" x 6" Riser		21	0	22.72
1	SB10	2" x 10" Plank		21	0	39.08
9	SB10	2" x 10" Plank		9	0	16.75
9	SB10	2" x 10" Plank		8	0	14.89

NOTE:
ALL PART & HARDWARE NUMBERS
ARE ALL STAR BLEACHERS INTERNAL
NUMBERS ONLY.



6550 NEW TAMPA HWY.
LAKELAND, FLORIDA 33815
(800) 875-3141
(863) 687-3141
FAX (813) 628-4254

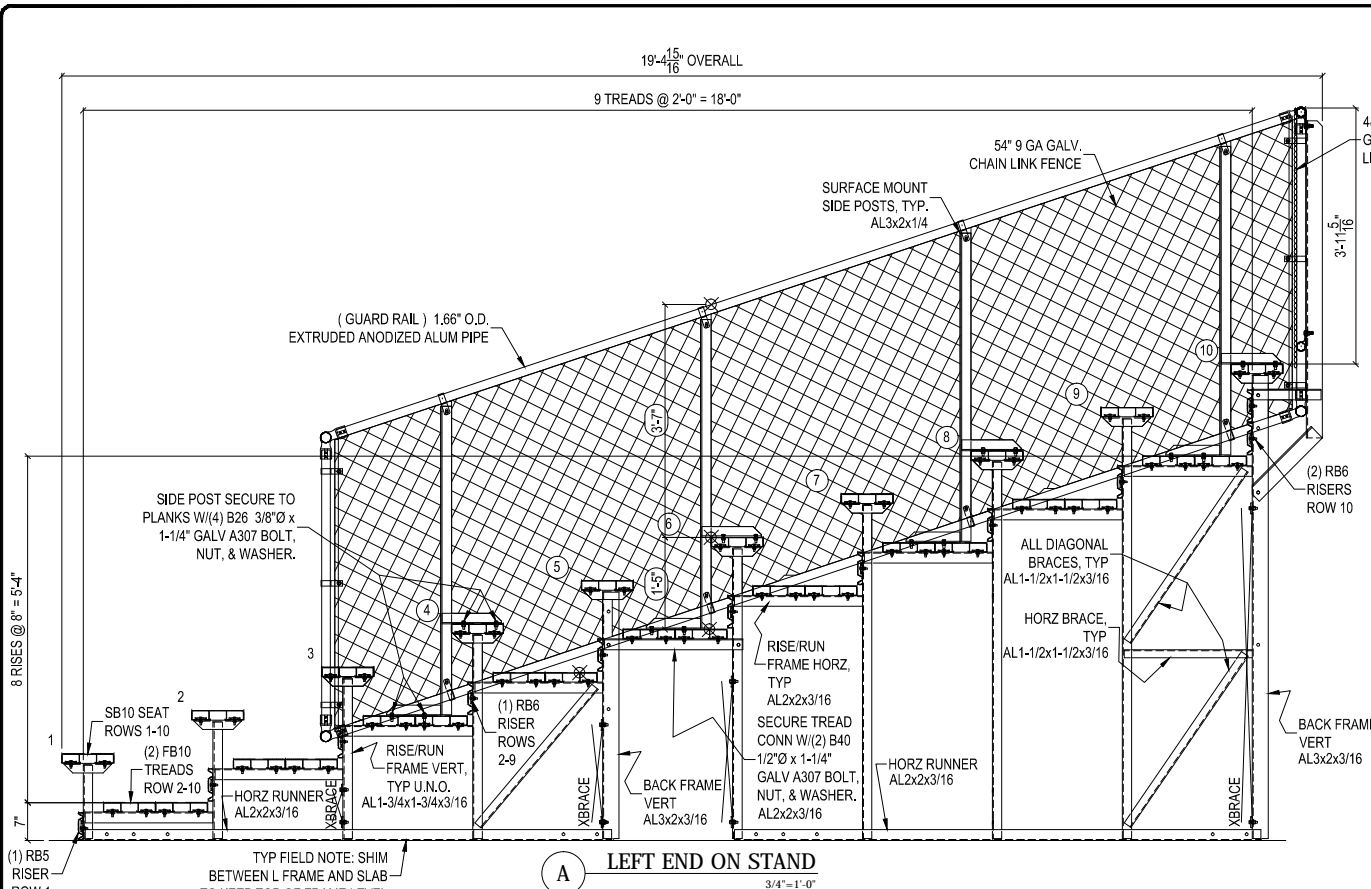


This drawing is the property of
All Star Bleachers
The information contained within is proprietary. Unauthorized reproduction through either mechanical or electronic medium is prohibited without the express written consent of
All Star Bleachers

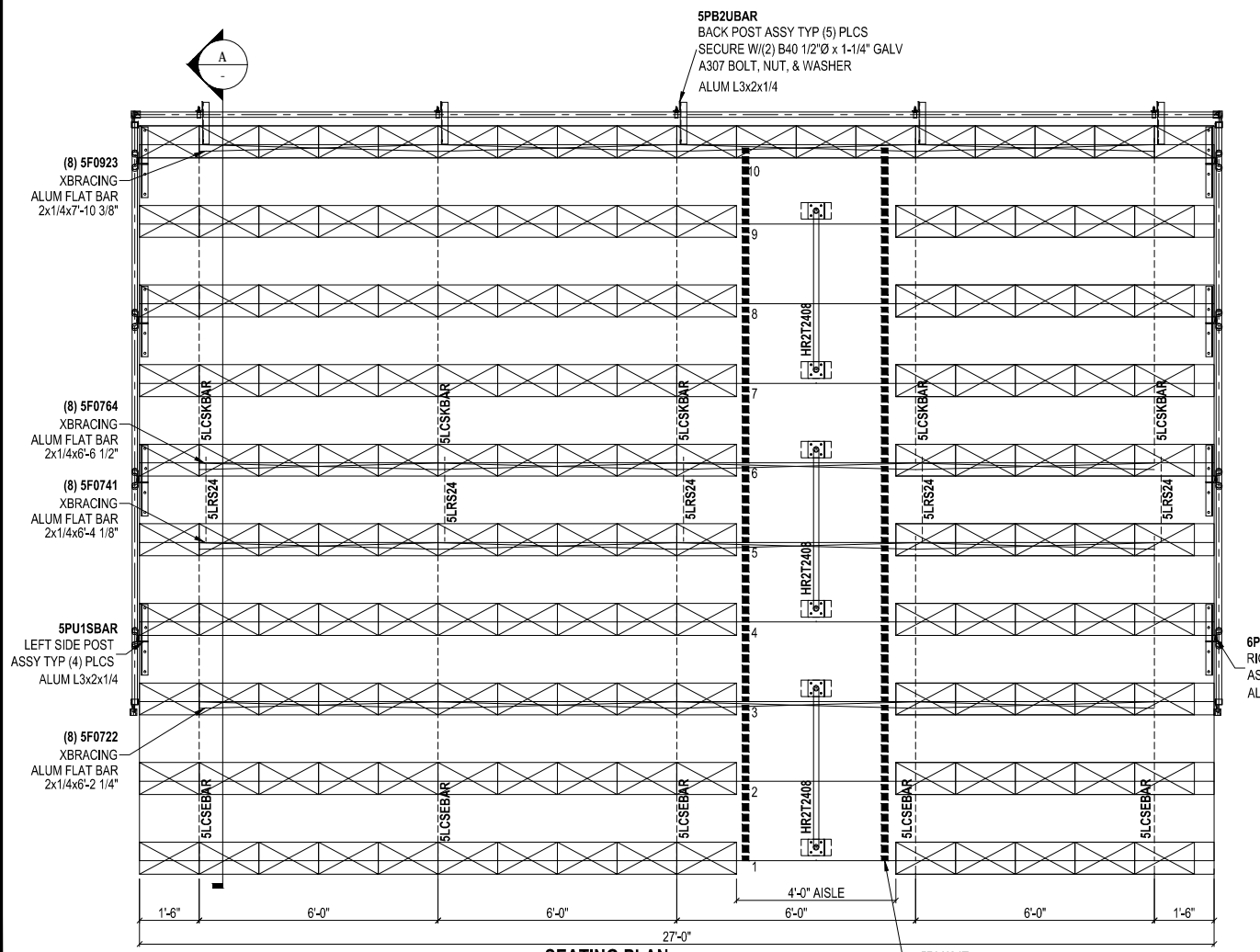
(1) 10 ROW x 21'-0"

10 ROW - PLAN, SECTIONS & DETAILS
SEMI-CLOSED PLANK CONFIGURATION
8" RISE / 24" TREAD
NON-ELEVATED

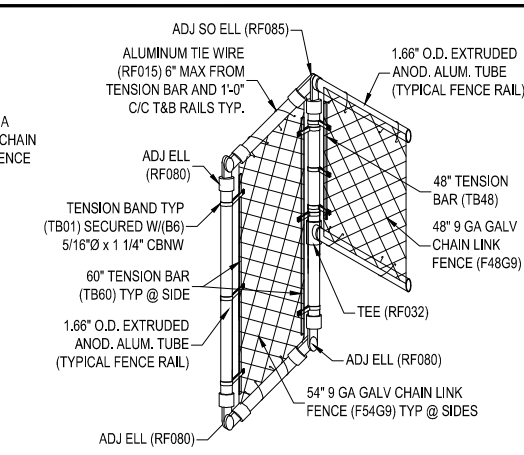
DRAWN BY: TJB DATE: 05-11-11
CHKD BY: DATE:
SCALE: N/A
JOB NUMBER:
ASBSTD
SHEET NUMBER:
A10D21CA
Rev.: 0



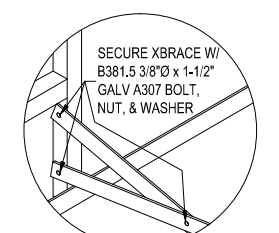
LEFT END ON STAND
SCALE: 3/4"=1'-0"



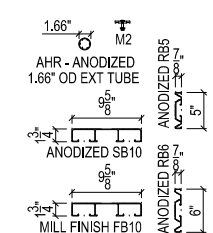
SEATING PLAN
SCALE: 1/2"=1'-0" SEAT CAPACITY: 153



TYP SIDE/BACK RAIL CONN'S
ISOMETRIC VIEW N.T.S.

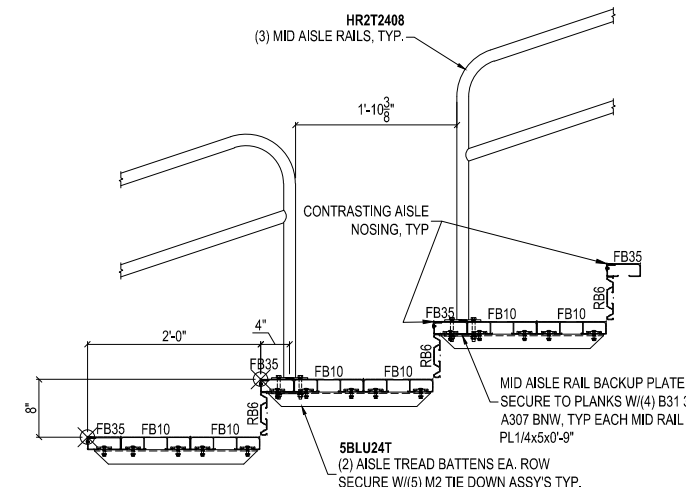
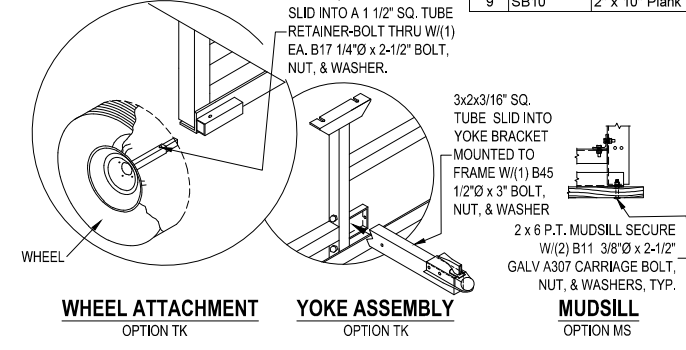


XBRACE001 - FLAT BRACE CONN
N.T.S.



ALUMINUM LEGEND
SCALE: 1"=1'-0"

OPTIONAL ACCESSORIES

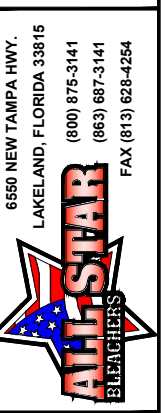
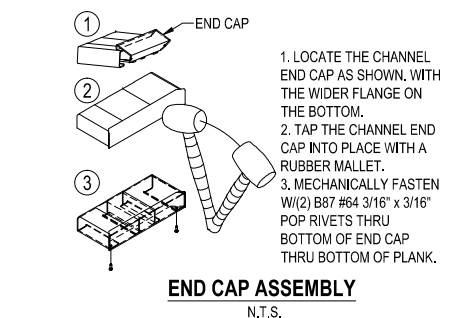
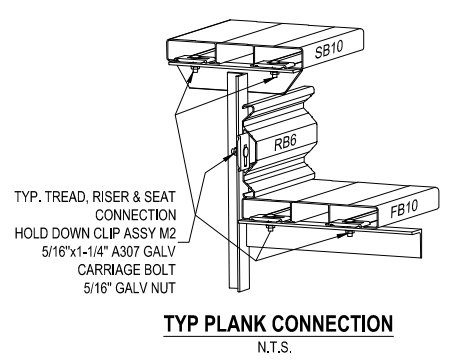


TYPICAL AISLE
SCALE: 1"=1'-0"

PART LIST TLL WT: 2766 TLL WT: 2766

QTY.	All Star Part #s	DESCRIPTION	UM	INCHES	EACH WEIGHT	EXTND'D WEIGHT
STRUCTURE						
5	5LCSSEBAR	Alum 5 Row 8x24-FBS Deck Typ Frame	1		28.23	141.16
5	5LCSKBAR	Alum 6-10 Row 8x24-FBS Deck Typ Frame	1		44.99	224.95
XBRACING						
8	5F0722	Alum Brace FB2 x 1/4" x 6'-2 1/4"	1		3.63	29.05
8	5F0741	Alum Brace FB2 x 1/4" x 6'-4 1/8"	1		3.72	29.78
8	5F0764	Alum Brace FB2 x 1/4" x 6'-6 1/2"	1		3.84	30.71
8	5F0923	Alum Brace FB2 x 1/4" x 7'-10 3/8"	1		4.61	36.92
MISCELLANEOUS						
18	5BLU24T	Alum 24" FBU Aisle Batten - AL2x2x3/16" x 1'-10 1/2"	1		1.59	28.69
5	5LRS24	Alum Tread Connector 24" FBS-AL2x2x3/16x 2'-1 1/2"	1		1.81	9.03
5	5PB2UBAR	Alum Back Post Not To Grade 8x24FBUFlatW-SB10 - AL3x2x1/4x 5'-10 5/16"	1		9.67	48.33
4	5PU1SBAR	Surf Mnt Post LIEOS/RVOM-8x24FBS W-SB10 - AL3x2x1/4x 4'-8 15/16"	1		8.59	34.34
4	6PU1SBAR	Surf Mnt Post LIEOS/LIVOM-8x24FBS W-SB10 - AL3x2x1/4x 4'-8 15/16"	1		8.59	34.34
RAILING						
6	5MPG005	Alum Hand Rail Base Backing Plate - Alum PL1/4x5x 0'-9"	1		1.10	6.62
4	AHR	1.66" OD Alum Extruded Tube x FT	15	5 1/4	8.38	33.53
2	AHR	1.66" OD Alum Extruded Tube x FT	27	2 1/2	14.77	29.55
4	AHR	1.66" OD Alum Extruded Tube x FT	4	2 1/2	2.29	9.14
3	HR2T2408	2 Tread Anod Alum Mid Aisle Hand Rail (24" Tread x 8" Rise)	1		14.00	42.00
FENCING / PICKET						
1	F48G9	48" 9 Ga K.K. Galv Fence x FT	28	0	81.48	81.48
2	F54G9	54" 9 Ga K.K. Galv Fence x FT	18	0	58.50	117.00
128	RF015	8-1/4" Alum Tie Wire	1		0.01	1.79
26	RF019	1-5/8" Heavy Duty Rail Strap	1		0.31	8.06
6	RF080	#80 Adjustable Elbow	1		1.20	7.20
2	RF032	#32 Tee	1		0.55	1.10
2	RF085	#85 Side Outlet Adj Elbow	1		1.40	2.80
18	TB01	1-5/8" Tension Band	1		0.14	2.52
2	TB48	48" Tension Bar	1		1.46	2.92
4	TB60	60" Tension Bar	1		1.84	7.36
MISC. HARDWARE						
18	B006	5/16" x 1-1/4" Galv A307 Carriage Bolt	1		0.04	0.72
26	B010	3/8" x 1-1/2" Galv A307 Carriage Bolt	1		0.08	2.08
32	B026	3/8" x 1-1/4" Galv A307 Bolt	1		0.07	2.24
24	B031	3/8" x 3" Galv A307 Bolt	1		0.12	2.88
20	B040	1/2" x 1-1/4" Galv A307 Bolt	1		0.18	3.56
45	B134	3/16" x 1/4" Grip Black Pop Rivet	1		0.00	0.07
166	B087	#84 3/16" x 3/16" Grip Alum Pop Rivet	1		0.00	0.42
56	B381.5	3/8" x 1-1/2" Galv A307 Bolt	1		0.07	3.92
420	M2	Tie Down Assembly	1		0.10	42.00
18	N02	5/16" Nut	1		0.00	0.00
138	N04	3/8" Nut	1		0.01	1.38
20	N07	1/2" Nut	1		0.04	0.80
138	W23	3/8" Flatwasher	1		0.02	2.76
20	W26	1/2" Flatwasher	1		0.04	0.80
MISC. ALUMINUM						
38	EC10	Anod. Alum. 1 3/4" Channel x 9-5/8" End Cap - 10" Plank	1		0.23	8.79
18	EC144	1 3/4" Channel MF Continuous End Cap	1	7 1/4	0.60	10.89
9	NOS48	Black Tread Nose - Extruded Alum L1" x 1" x 1/8" x 4'-0"	1		0.94	8.50
18	EC5	Anod. Alum. 1 3/4" Channel x 4-5/8" End Cap - 5" Plank	1		0.11	1.94
ALUMINUM						
18	FB10	1.75" x 10" MF Plank	27	0	50.25	904.45
9	FB35	1.75" x 5" Long Nose Plank	4	0	4.45	40.03
10	RB6	7/8" x 6" Riser	27	0	29.21	292.14
1	SB10	2" x 10" Plank	27	0	50.25	50.25
9	SB10	2" x 10" Plank	15	0	27.92	251.24
9	SB10	2" x 10" Plank	8	0	14.89	133.99

NOTE:
ALL PART & HARDWARE NUMBERS ARE ALL STAR BLEACHERS INTERNAL NUMBERS ONLY.



6560 NEW TAMPA HWY.
LAKELAND, FLORIDA 33815
(800) 875-3141
(863) 687-3141
FAX (813) 628-4254

This drawing is the property of
All Star Bleachers
The information contained within is proprietary. Unauthorized reproduction through either mechanical or electronic medium is prohibited without the express written consent of
All Star Bleachers

(1) 10 ROW x 27'-0"

5AS10BA0270G9FRN (A10D27C)
ALUMINUM 10 ROW x 27'-0"
8" RISE x 24" TREAD FBS
10" SEAT DBL FT BD

DRAWN BY: DKW DATE: 05-12-11
CHKD BY: DATE:
SCALE: N/A
JOB NUMBER:
STANDARD
SHEET NUMBER:
A10D27CA
Rev.: 0