

1000 seat plan standard

*General Notes:

1. STRUCTURAL DESIGN IS IN ACCORDANCE WITH IBC 2006/ ICC 300
2. LOADS USED IN THE STRUCTURAL DESIGN ARE AS FOLLOWS:
LIVE LOADS-
GRANDSTAND GROSS HORIZONTAL PROJECTION.....100 PSF
HORIZONTAL SWAY PARALLEL TO SEATS.....24 PLF OF SEAT
HORIZONTAL SWAY PERPENDICULAR TO SEATS.....10 PLF OF SEAT

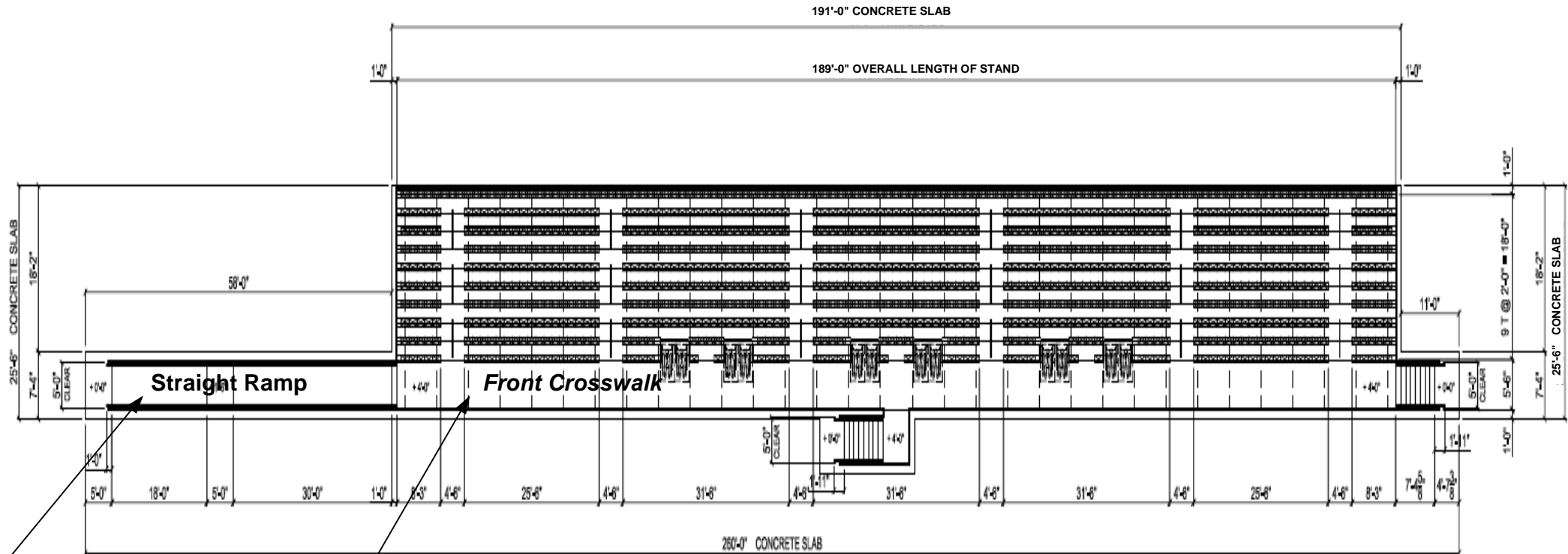
SEAT AND FOOTBOARDS.....120 PLF
3. DUE TO THE WIDE DIFFERENCE IN PARAMETERS AND SCOPE FOR EACH INDIVIDUAL PROJECT, THESE DRAWINGS SHOULD BE USED AS A REFERENCE FOR IDEAS AND OPTIONS ONLY.

RAILING.
(AS PER - ICC 300)
200 LB CONCENTRATED LOAD APPLIED AT TOP RAIL
50 PLF HORIZONTAL LOAD WITH A 100 PLF VERTICAL LOAD

WIND LOADS IN ACCORDANCE WITH ICC 300
BASIC WIND SPEED.....(EXPOSURE -8).....Determined by location
ASSUMED SOIL BEARING PRESSURE.....2000 PSF

ALUMINUM

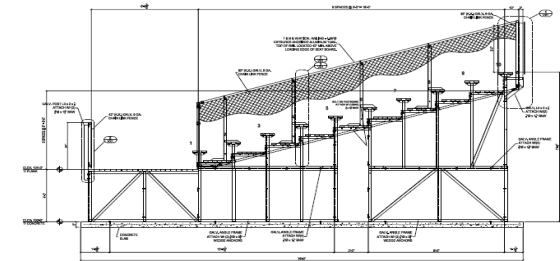
1. PLANKS SHALL BE ALUMINUM ALLOY 6063-T6
2. SEATPLANKS SHALL HAVE A CLEAR ANODIZED FINISH 204R1
3. BOLTS SHALL BE HOT DIPPED GALVANIZED ASTM A307



SEATING LOCATION PLAN

SEATING CAPACITY

NET BENCH SEATING	=	1016
COMPANION SEATS	=	12
WHEEL CHAIR SPACES	=	12
TOTAL SEATING	=	1040
GROSS (18") SEATS	=	1260



Typical 10 row angle frame with tread 24" x rise 8"



ALL STAR BLEACHERS
6550 NEW TAMPA HIGHWAY
LAKELAND, FLORIDA 33815
Phone (800) 875-3141
Fax (813) 628-4254
Website: www.allstarbleachers.com
Contact: salesdept@allstarbleachers.com
***BUILDING QUALITY BLEACHERS FOR OVER 50 YEARS**

<p>Ramp options</p> <p>U Shaped</p> <p>Slope 1": 12" 1" of elevation = 1' ramp 30" elevated stand = 30' ramp</p> <p>L Shaped</p>	<p>Front Crosswalk Elevation Height Options From Grade</p> <p>30" Standard (least expensive) 42" Standard 48" Standard</p>	<p>Deck and Plank configuration options Seat plank and risers anodized, footboards mill finish</p> <p>Standard Tread rise and run 24"run x 8" rise Other treads: 24"run x 12"rise 26"run x 13"rise 33"run x 13"rise 36"run x 13"rise</p> <p>*Most common and economical*</p> <p>Semi-Closed Deck: Consists of a seat plank, tread planks and a riser plank arranged to reject a 4" sphere. Size of tread/riser planks depends upon desired riser height and tread depths. Tread plank vertical height: 1.75".</p> <p>Closed Deck: Consists of a tread-mounted seat plank and a combination of tread or riser mounted planks to form a completely closed riser and tread. Tread plank vertical height: 1.75".</p> <p>Lockjoint (interlocking deck): Used to stiffen 1.5" vertical-height planks. The extrusion includes a lock joint feature, which joins the planks to each other. *Lockjoint is stiffer than welded*</p>		<p>Press Boxes: Standards- 8'd x 18'L x 24'L x 30'L x 36'L x 42'L x 48'L x 54'L x 60' L</p> <p>Other sizes and configurations available. Optional roof filming platform.</p>
<p>Front Crosswalk Width Options To Accommodate ADA</p> <p>66" Wide Standard 72" Wide Standard</p>				