

**\*General Notes:**

1. STRUCTURAL DESIGN IS IN ACCORDANCE WITH IBC 2006/ ICC 300
2. LOADS USED IN THE STRUCTURAL DESIGN ARE AS FOLLOWS:  
LIVE LOADS-  
GRANDSTAND GROSS HORIZONTAL PROJECTION.....100 PSF  
HORIZONTAL SWAY PARALLEL TO SEATS.....24 PLF OF SEAT  
HORIZONTAL SWAY PERPENDICULAR TO SEATS.....10 PLF OF SEAT  
SEAT AND FOOTBOARDS.....120 PLF
3. DUE TO THE WIDE DIFFERENCE IN PARAMETERS AND SCOPE FOR EACH INDIVIDUAL PROJECT, THESE DRAWINGS SHOULD BE USED AS A REFERENCE FOR IDEAS AND OPTIONS ONLY.

**RAILING.**  
( AS PER - ICC 300)  
200 LB CONCENTRATED LOAD APPLIED AT TOP RAIL  
50 PLF HORIZONTAL LOAD WITH A 100 PLF VERTICAL LOAD

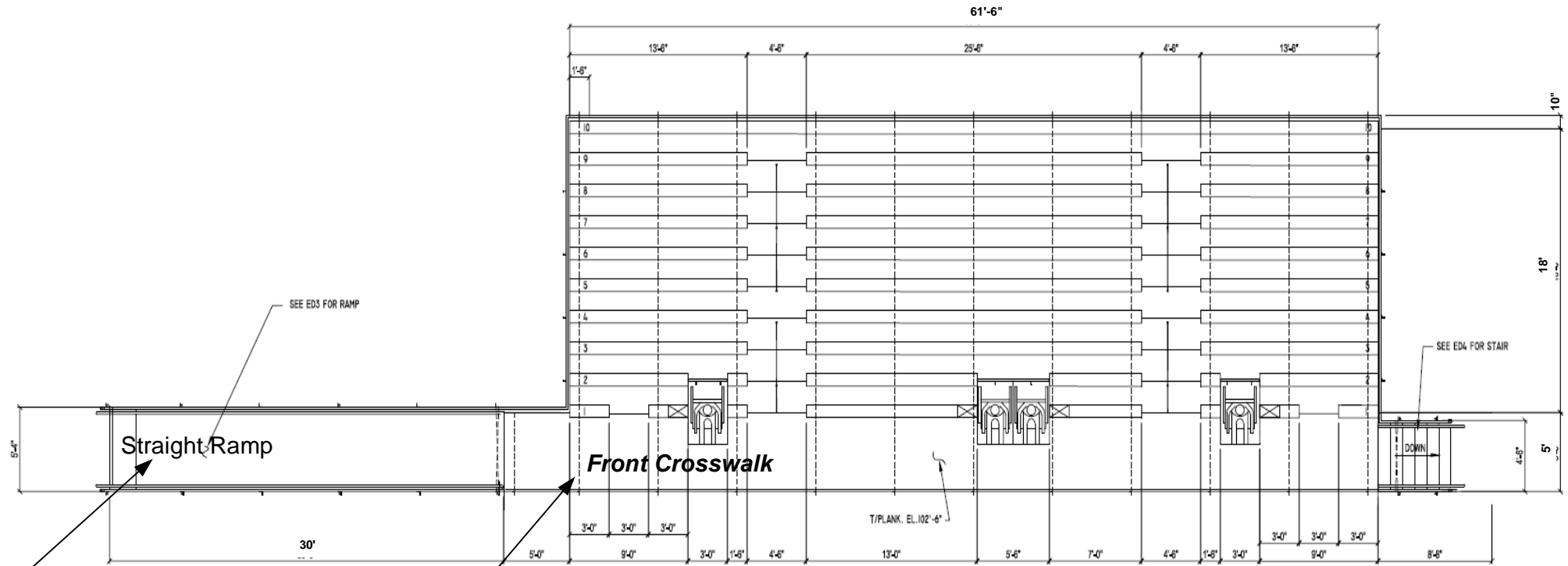
WIND LOADS IN ACCORDANCE WITH ICC 300  
BASIC WIND SPEED.....(EXPOSURE -8).....Determined by location  
ASSUMED SOIL BEARING PRESSURE.....2000 PSF

- ALUMINUM**
1. PLANKS SHALL BE ALUMINUM ALLOY 6063-T6
  2. SEATPLANKS SHALL HAVE A CLEAR ANODIZED FINISH 204R1
  3. BOLTS SHALL BE HOT DIPPED GALVANIZED ASTM A307



**ALL STAR BLEACHERS**  
6550 NEW TAMPA HIGHWAY  
LAKELAND, FLORIDA 33815  
Phone (800) 875-3141  
Fax (813) 628-4254  
Website: [www.allstarbleachers.com](http://www.allstarbleachers.com)  
Contact: [salesdept@allstarbleachers.com](mailto:salesdept@allstarbleachers.com)  
**\*BUILDING QUALITY BLEACHERS FOR OVER 50 YEARS**

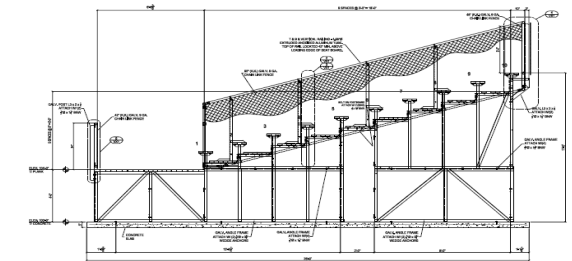
**300 seat plan standard**



**SEATING PLAN**

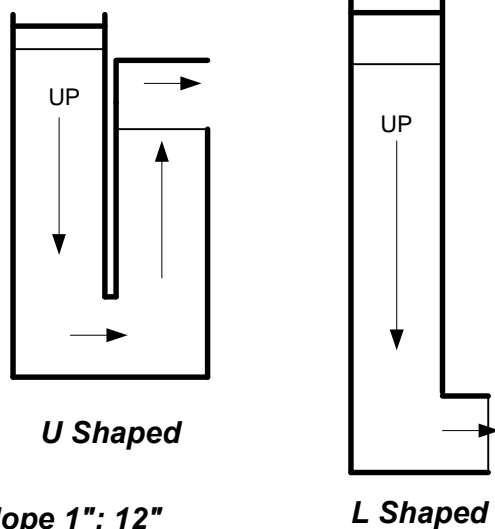
**SEATING CAPACITY**

VIP SEATING	=	
NET BENCH SEATING	=	330
COMPANION SEATS	=	4
WHEEL CHAIR SPACES	=	4
TOTAL SEATING	=	338



Typical 10 row angle frame with tread 24" x rise 8"

**Ramp options**



**Slope 1": 12"**  
**1" of elevation = 1' ramp**  
**30" elevated stand = 30' ramp**

**Front Crosswalk Elevation Height Options From Grade**

- 30" Standard (least expensive)
- 42" Standard
- 48" Standard

**Front Crosswalk Width Options To Accommodate ADA**

- 66" Wide Standard
- 72" Wide Standard

**Deck and Plank configuration options**

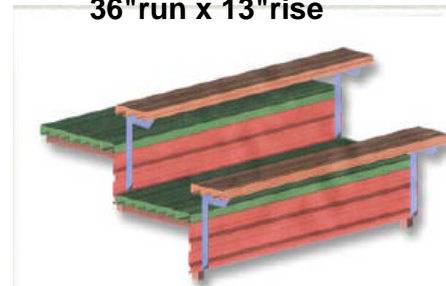
**Seat plank and risers anodized, footboards mill finish**  
**Standard Tread rise and run 24"run x 8" rise**

- Other treads:**
- 24"run x 12"rise
  - 26"run x 13"rise
  - 33"run x 13"rise
  - 36"run x 13"rise

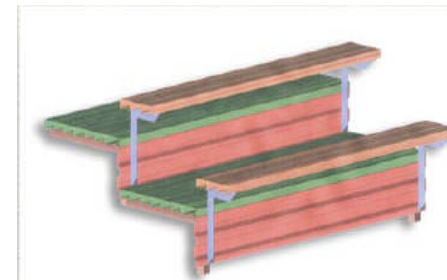
**\*Most common and economical\***



**Semi-Closed Deck:** Consists of a seat plank, tread planks and a riser plank arranged to reject a 4" sphere. Size of tread/riser planks depends upon desired riser height and tread depths. Tread plank vertical height: 1.75".



**Closed Deck:** Consists of a tread-mounted seat plank and a combination of tread or riser mounted planks to form a completely closed riser and tread. Tread plank vertical height: 1.75".



**Lockjoint (interlocking deck):** Used to stiffen 1.5" vertical-height planks. The extrusion includes a lock joint feature, which joins the planks to each other.

**\*Lockjoint is stiffer than welded\***

**Press Boxes:**

- Standards-**
- 8'd x 18'L
  - x 24'L
  - x 30'L
  - x 36'L
  - x 42'L
  - x 48'L
  - x 54'L
  - x 60' L

**Other sizes and configurations available.**  
**Optional roof filming platform.**