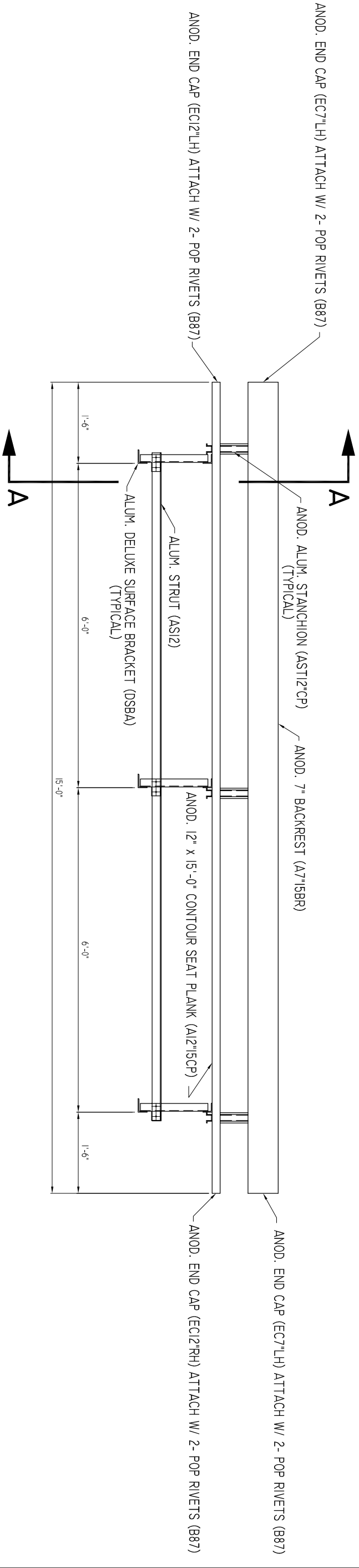


SECTION A-A

SCALE: 1" = 1'-0"



PARTS LIST

| QTY PER UNIT | PART NUMBER | DESCRIPTION |
|--------------|-------------|--|
| 1 | DSBA15 | ALUMINUM SURFACE MOUNT DELUXE TEAM BENCH X 15'-0" |
| 1 | A12CP15 | ANOD. 2 X 12 X 15'-0" CONTOUR SEAT PLANK |
| 1 | A715BR | ANOD. 7" BACKREST X 15'-0" |
| 3 | AST12CP | ANOD. ALUMINUM STANCHION (12" CONTOUR SEAT) |
| 3 | DSBA | MILL FINISH ALUMINUM DELUXE SURFACE MOUNT BRACKET |
| 1 | AS12 | MILL FINISH ALUMINUM STRUT ANGLE (AL. 1/2 X 2 X 3/16 X 12'-4 1/4) |
| 1 | EC1RH | ANOD. ALUMINUM END CAP, 7" L/H, BACKREST |
| 1 | EC1LH | ANOD. ALUMINUM END CAP (FOR 12" CONTOUR SEAT PLANK) |
| 1 | EC12RH | ANOD. ALUMINUM END CAP (FOR 12" CONTOUR SEAT PLANK) |
| 12 | M2 | TIE DOWN ASS'Y. |
| 6 | B25 | 3/8 X 1" B/W |
| 6 | B73 | 1/2 X 2 3/4" GALV. WEDGE ANCHOR |
| 14 | B87 | NO. 64 3/16 X 3/16 GRIP POP RIVET (FOR BACKREST & BACKREST END CAPS) |

ALUMINUM DELUXE TEAM BENCH X 15'-0" - DSBA15

(SURFACE MOUNT)

SCALE: 1/2" = 1'-0"

| ISSUE | DATE |
|-------|------|
| | |
| | |

| | |
|---------|----------|
| DRAWN | FOY |
| CHECKED | |
| DATE | |
| SCALE | NOTED |
| JOB NO. | STANDARD |
| SHEET | DSBA15 |

THIS DRAWING IS THE PROPERTY OF ALL STAR BLEACHERS. THE INFORMATION CONTAINED HEREIN IS UNAUTHORIZED FOR REPRODUCTION OR TRANSMISSION IN ANY FORM OR BY ANY MEANS, ELECTRONIC, MECHANICAL, OR PHOTOCOPYING, RECORDING, OR BY ANY INFORMATION STORAGE AND RETRIEVAL SYSTEM. WITHOUT THE WRITTEN CONSENT OF ALL STAR BLEACHERS.

ALUMINUM SURFACE MOUNT
DELUXE TEAM BENCH X 15'-0"
DSBA15



6550 NEW TAMPA HWY.
LAKELAND, FLORIDA 33815
FAX (813) 628-4254
(800) 875-3141
(863) 687-3141