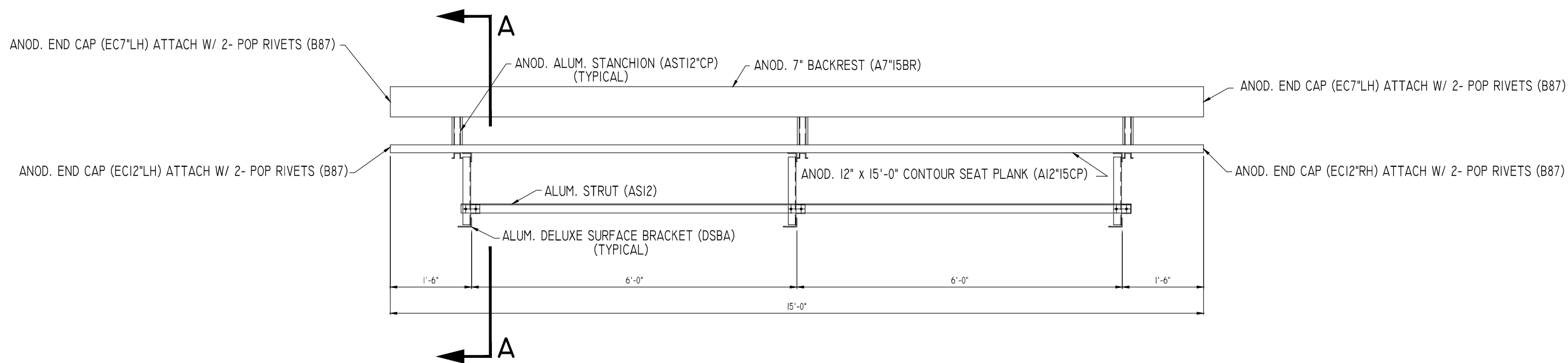


SECTION A-A

SCALE: 1" = 1'-0"



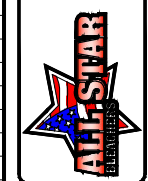
ALUMINUM DELUXE TEAM BENCH x 15'-0" - DSBA15
(SURFACE MOUNT)

SCALE: 1/2" = 1'-0"

PARTS LIST

QTY PER UNIT	PART NUMBER	DESCRIPTION
1	DSBA15	ALUMINUM SURFACE MOUNT DELUXE TEAM BENCH x 15'-0"
1	A12"CP15	ANOD. 2 x 12 x 15'-0" CONTOUR SEAT PLANK
1	A7"15BR	ANOD. 7" BACKREST x 15'-0"
3	AST12"CP	ANOD. ALUMINUM STANCHION (12" CONTOUR SEAT)
3	DSBA	MILL FINISH ALUMINUM DELUXE SURFACE MOUNT BRACKET
1	AS12	MILL FINISH ALUMINUM STRUT ANGLE (AL. L2 x 2 x 3/16 x 12'-4 1/4")
1	EC7"LH	ANOD. ALUMINUM END CAP, 7" L/H, BACKREST
1	EC7"RH	ANOD. ALUMINUM END CAP, 7" R/H, BACKREST
1	EC12"LH	ANOD. ALUMINUM END CAP (FOR 12" CONTOUR SEAT PLANK)
1	EC12"RH	ANOD. ALUMINUM END CAP (FOR 12" CONTOUR SEAT PLANK)
12	M2	TIE DOWN ASS'Y.
6	B25	3/8 x 1" BSW
6	B73	1/2 x 2 3/4" GALV. WEDGE ANCHOR
14	B87	No. 64 3/16 x 3/16 GRIP POP RIVET (FOR BACKREST & BACKREST END CAPS)

6550 NEW TAMPA HWY.
LAKELAND, FLORIDA 33815
FAX (813) 698-4264
(800) 875-3141
(863) 687-3141

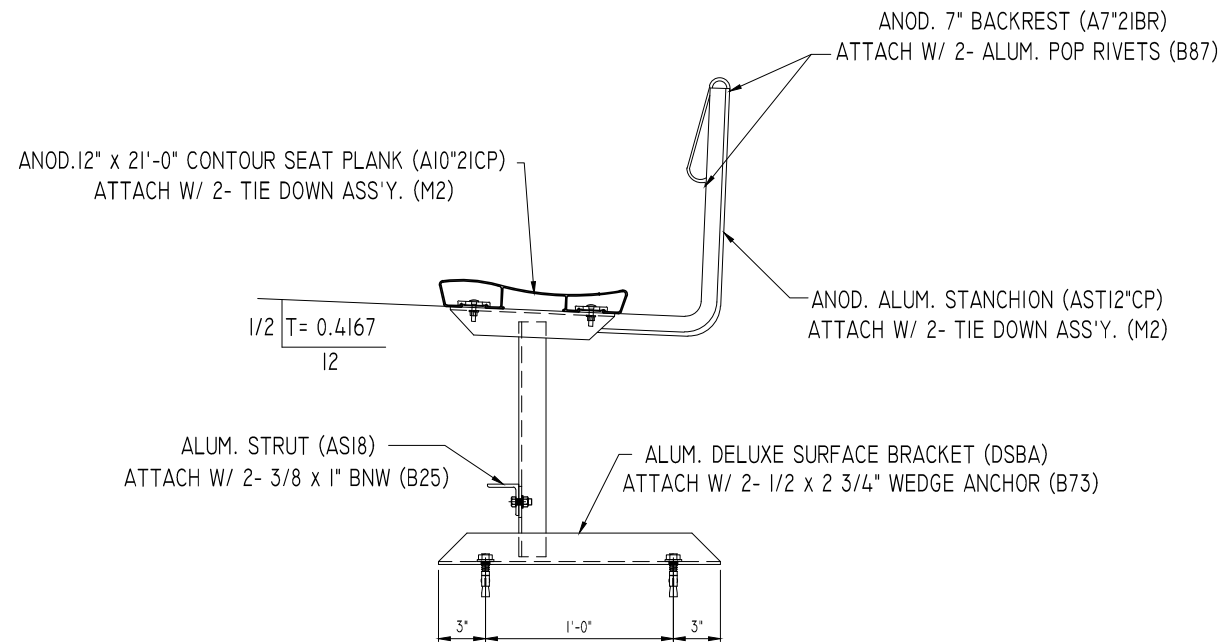


ALUMINUM SURFACE MOUNT
DELUXE TEAM BENCH x 15'-0"
DSBA15

THIS DRAWING IS THE PROPERTY OF ALL STAR BLEACHERS. THE INFORMATION CONTAINED WITHIN IS PROPRIETARY. UNAUTHORIZED REPRODUCTION THROUGH EITHER MECHANICAL OR ELECTRONIC MEANS IS PROHIBITED WITHOUT THE EXPRESS WRITTEN CONSENT OF ALL STAR BLEACHERS.

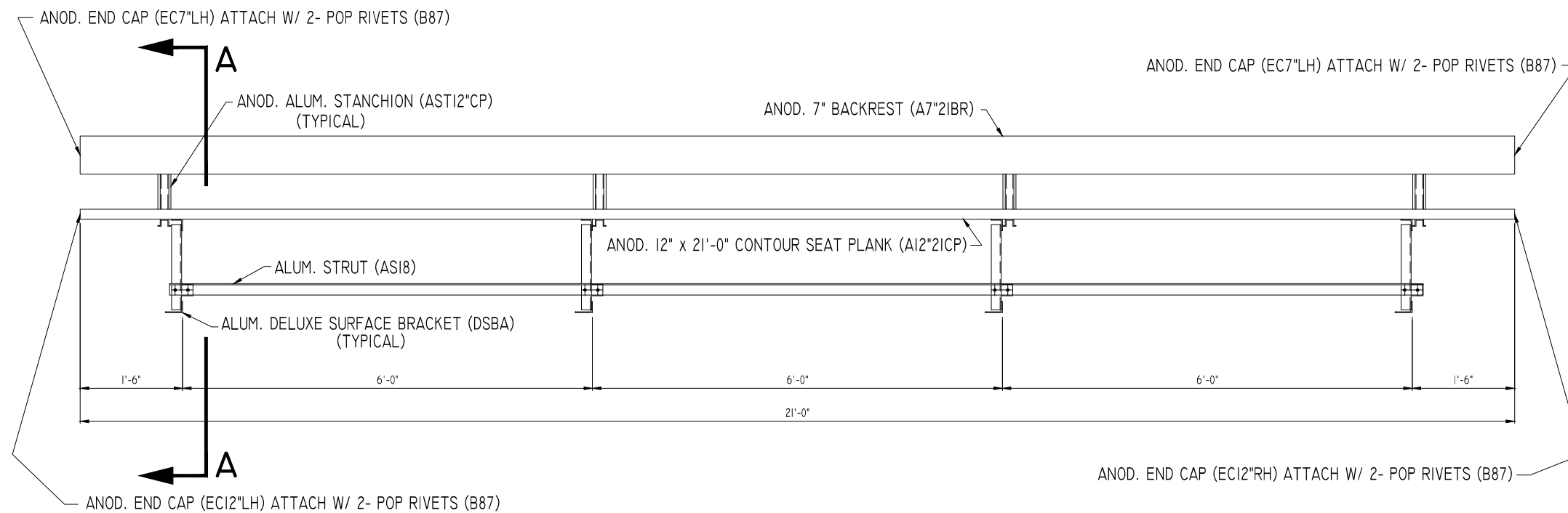
DRAWN
FOY
CHECKED
DATE
SCALE
NOTED
JOB NO.
STANDARD
SHEET
DSBA15

ISSUE	DATE



SECTION A-A

SCALE: 1" = 1'-0"



ALUMINUM DELUXE TEAM BENCH x 21'-0" - DSBA21
(SURFACE MOUNT)

SCALE: 1/2" = 1'-0"

PARTS LIST

QTY PER UNIT	PART NUMBER	DESCRIPTION
1	DSBA21	ALUMINUM SURFACE MOUNT DELUXE TEAM BENCH x 21'-0"
1	A12*CP21	ANOD. 2 x 12 x 21'-0" CONTOUR SEAT PLANK
1	A7*2IBR	ANOD. 7" BACKREST x 21'-0"
4	ASTI2*CP	ANOD. ALUMINUM STANCHION (12" CONTOUR SEAT)
4	DSBA	ALUMINUM DELUXE SURFACE MOUNT BRACKET
1	ASI8	ALUMINUM STRUT ANGLE (AL. L2 x 2 x 3/16 x 18'-4 1/4")
1	EC7*LH	ANOD. ALUMINUM END CAP, 7" L/H, BACKREST
1	EC7*RH	ANOD. ALUMINUM END CAP, 7" R/H, BACKREST
1	EC12*LH	ANOD. ALUMINUM END CAP (FOR 12" CONTOUR SEAT PLANK)
1	EC12*RH	ANOD. ALUMINUM END CAP (FOR 12" CONTOUR SEAT PLANK)
16	M2	TIE DOWN ASS'Y.
8	B25	3/8 x 1" BNW
8	B73	1/2 x 2 3/4" GALV. WEDGE ANCHOR
16	B87	No. 64 3/16 x 3/16 GRIP POP RIVET (FOR BACKREST & BACKREST END CAPS)

6550 NEW TAMPA HWY.
LAKELAND, FLORIDA 33815
FAX (813) 698-4264
(800) 875-3141
(863) 687-3141



ALUMINUM SURFACE MOUNT
DELUXE TEAM BENCH x 21'-0"
DSBA21

THIS DRAWING IS THE PROPERTY OF ALL STAR BLEACHERS. THE INFORMATION CONTAINED WITHIN IS PROPRIETARY. UNAUTHORIZED REPRODUCTION THROUGH EITHER MECHANICAL OR ELECTRONIC MEANS IS PROHIBITED WITHOUT THE EXPRESS WRITTEN CONSENT OF ALL STAR BLEACHERS.

DRAWN
FOY
CHECKED

DATE

SCALE
NOTED
JOB NO.
STANDARD
SHEET
DSBA21

ISSUE	DATE